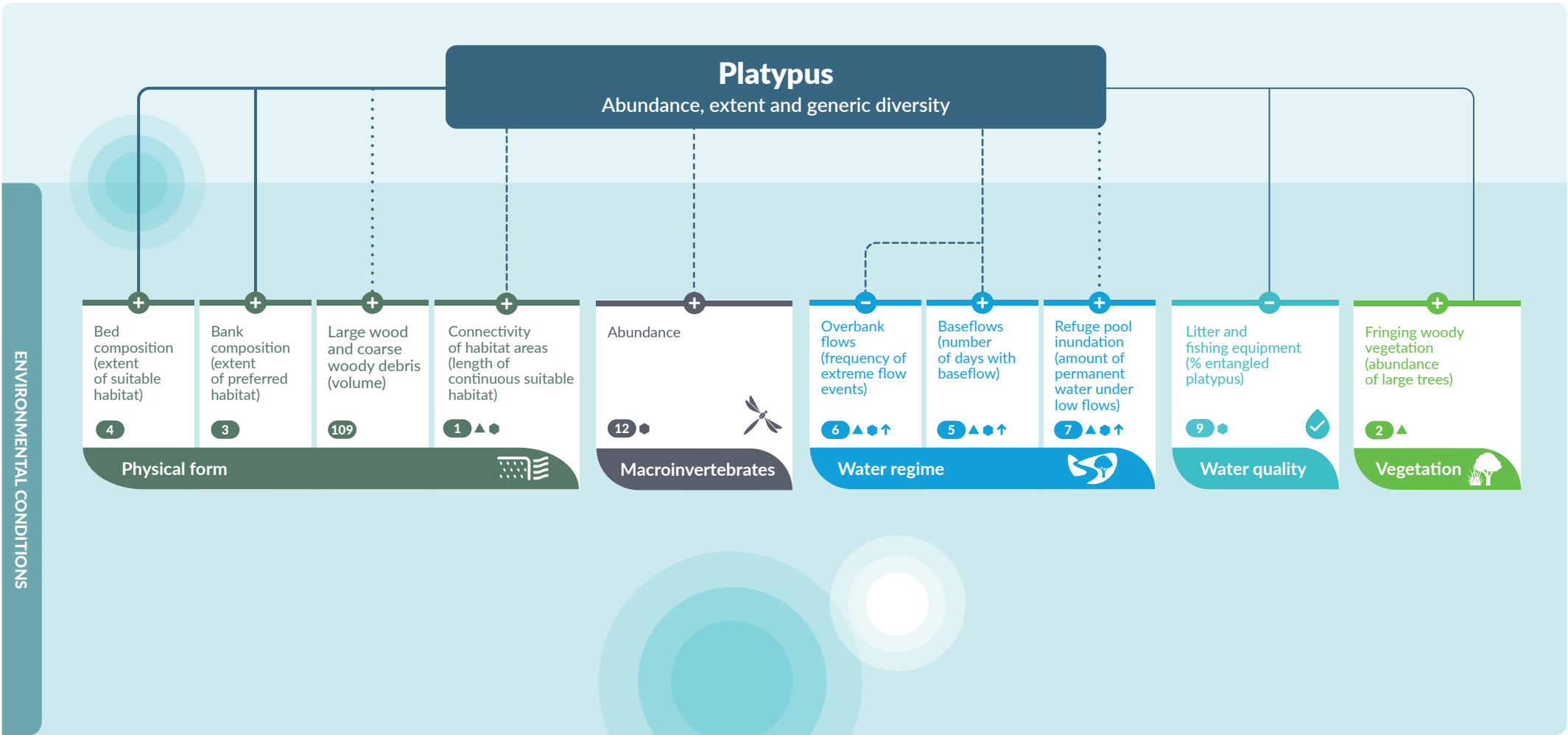




ENVIRONMENTAL CONDITIONS



## ACTIONS TO IMPROVE ENVIRONMENTAL CONDITIONS

- Foundational activities
- Waterway management structures & operation
- Vegetation management
- Water licence and entitlement management
- Urban stormwater and pollution management

Relationship strength (Strong or Moderate) Confidence (High or Medium)

Strong, High — Moderate, High —  
Strong, Medium - - - Moderate, Medium ····

Indicative relationship direction\*

Positive + (increase in condition will lead to *increase* in value)  
Negative - (increase in condition will lead to *decrease* in value)

\* These general relationships typically apply within the bounds of thresholds

Relationship ID 00

Themes: ↑ Sensitive to upstream catchment  
▲ Climate change  
● Urbanization

Influence of actions on environmental conditions

